

Product

Z1-11A0003535 - 35L Hydro-Plus Potable Floor Standing Expansion Vessel
 Z1-11A0005035 - 50L Hydro-Plus Potable Floor Standing Expansion Vessel
 Z1-11A0008035 - 80L Hydro-Plus Potable Floor Standing Expansion Vessel
 Z1-11A0010535 - 105L Hydro-Plus Potable Floor Standing Expansion Vessel
 Z1-11A0012935 - 129L Hydro-Plus Potable Floor Standing Expansion Vessel
 Z1-11A0015035 - 150L Hydro-Plus Potable Floor Standing Expansion Vessel
 Z1-11A0020735 - 207L Hydro-Plus Potable Floor Standing Expansion Vessel
 Z1-11A0025035 - 250L Hydro-Plus Potable Floor Standing Expansion Vessel
 Z1-11A0030035 - 300L Hydro-Plus Potable Floor Standing Expansion Vessel
 Z1-11A0045035 - 450L Hydro-Plus Potable Floor Standing Expansion Vessel
 Z1-11A0050035 - 500L Hydro-Plus Potable Floor Standing Expansion Vessel
 Z1-11A0060035 - 600L Hydro-Plus Potable Floor Standing Expansion Vessel

Technical Specification

Operating Temperatures: -10°C - 99°C
 Max Working Pressure: 10 Bar
 Pre Charge Pressure: 2 Bar
 Shell: MIG Welded Carbon Steel
 Connection: Stainless Steel
 Membrane: Butyl

Dimensions

Part Code	Volume (litres)	ØD (mm)	H (mm)	E (mm)	ØC
Z1-11A0003535	35	380	367	135	G1
Z1-11A0005035	50	380	505	153	G1
Z1-11A0008035	80	450	683	40	G1
Z1-11A0010535	105	500	741	40	G1 1/4
Z1-11A0012935	129	500	862	40	G1 1/4
Z1-11A0015035	150	500	973	40	G1 1/4
Z1-11A0020735	207	500	1246	40	G1 1/4
Z1-11A0025035	250	630	1045	52	G1 1/4
Z1-11A0030035	300	630	1193	52	G1 1/4
Z1-11A0045035	450	630	1745	52	G1 1/4
Z1-11A0050035	500	750	1340	290	G1 1/4
Z1-11A0060035	600	750	1460	290	G1 1/4



Additional Information

6 years warranty

Complete with polypropylene base

100% factory tested

Externally finished in a hard wearing epoxy powder coating

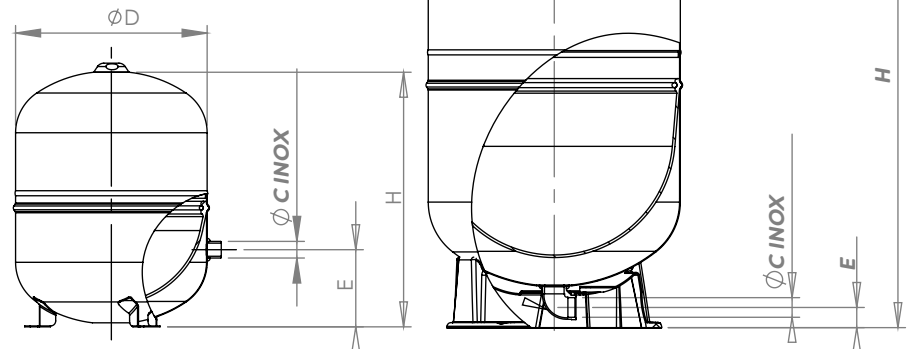
Fixed butyl membrane designed to avoid any water stagnation.

Fully certified according to the pressure equipment directive 2014/68/EU

Scan below for more information and the vessel sizing calculator!

STANDARD MODEL WITH TECHNOPOLYMER BASE
 80 ÷ 150(L) - 250(L) 300(L)

STANDARD MODEL WITH FEET
 35 ÷ 50(L)



Dimensions continued on page 2



Scan for Vessel Sizing Calculator

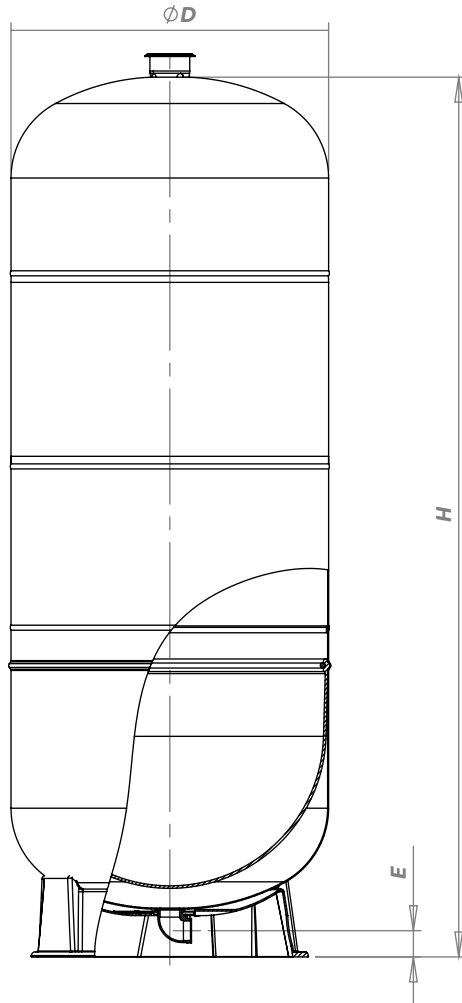
Intatec UK Limited, Airfield Industrial Estate,
 Hixon, Stafford, ST18 OPF

T. 01889 272180 E. sales@intatec.co.uk

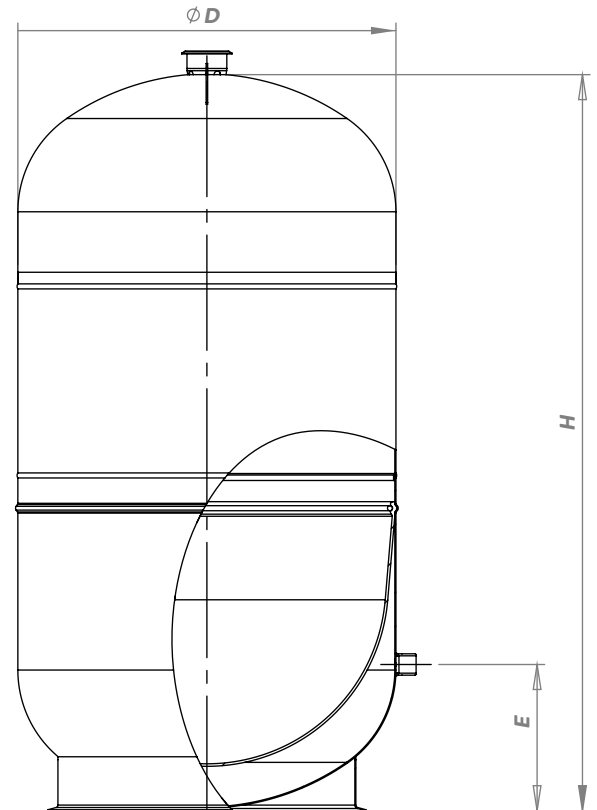
Dimensions

Part Code	Volume (litres)	ØD (mm)	H (mm)	E (mm)	ØC
Z1-11A0003535	35	380	367	135	G1
Z1-11A0005035	50	380	505	153	G1
Z1-11A0008035	80	450	683	40	G1
Z1-11A0010535	105	500	741	40	G1 1/4
Z1-11A0012935	129	500	862	40	G1 1/4
Z1-11A0015035	150	500	973	40	G1 1/4
Z1-11A0020735	207	500	1246	40	G1 1/4
Z1-11A0025035	250	630	1045	52	G1 1/4
Z1-11A0030035	300	630	1193	52	G1 1/4
Z1-11A0045035	450	630	1745	52	G1 1/4
Z1-11A0050035	500	750	1340	290	G1 1/4
Z1-11A0060035	600	750	1460	290	G1 1/4

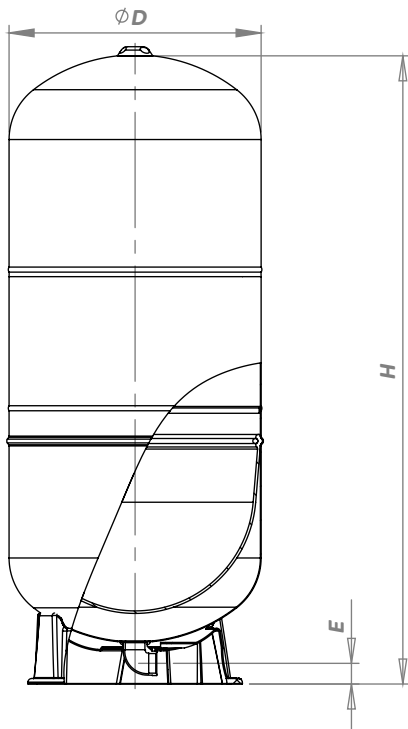
STANDARD MODEL WITH
TECHNOPOLYMER BASE
450(L)



STANDARD MODEL WITH
CARBON STEEL BASE
500-600(L)



STANDARD MODEL WITH
TECHNOPOLYMER BASE
207(L)



Scan for Vessel
Sizing Calculator

Intatec UK Limited, Airfield Industrial Estate,
Hixon, Stafford, ST18 OPF
T. 01889 272180 E. sales@intatec.co.uk

08/25
E&OE