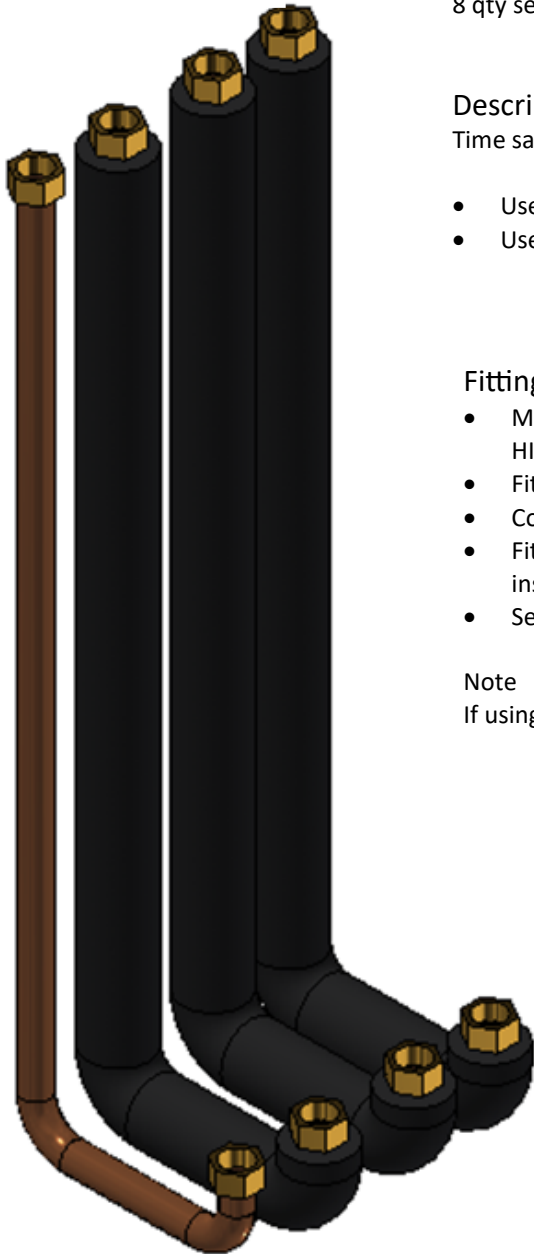


All connections at top (set of 4 insulated preformed pipes)

Part Code HI2ACCON

Contents

4 qty 18mm preformed copper pipes with 13mm insulation
Fitted 3/4" union nuts with flat face connection surface
8 qty sealing gaskets



Description

Time saving Pre-formed pipes to create all connections on the top of the HIU.

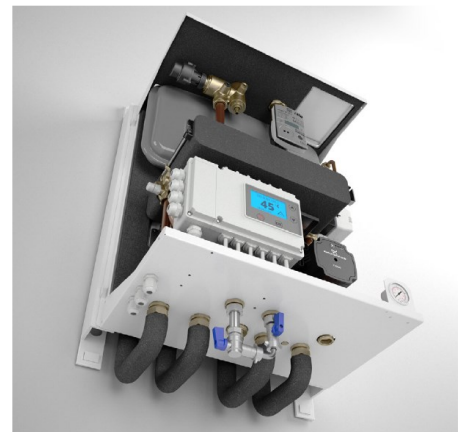
- Use with stand off brackets Part Code HI2ACBKT
- Use with Isolation Valves set HI2ACISO (3/4" MxM flat face connection)

Fitting Instruction

- Mount stand off brackets onto the as shown on instructions for HI2ACBKT.
- Fit the pipes using the gaskets provided.
- Connect the isolation valves (HI2ACISO), using the gaskets provided.
- Fit the HIU wall bracket and hang the HIU as detailed in Hiper II installation instructions.
- Secure the pipe work from the supply first fix pipe work,

Note

If using a First Fix Jig see the instructions provided with the JIG



Intatec Ltd

Airfield Industrial Estate
Hixon
Staffordshire
ST18 0PF

Tel: **01889 272 180**

Fax: **01889 272 181**

email: **sales@intatec.co.uk**

web: **www.intatec.co.uk**