

IN LINE FILTERS

Introduction

Inta's straight line filters are designed to be fitted conveniently in-line, available in a range of sizes from 15mm to 4" with 100 and 800 micron filters. The strainer provides protection to any heating system by passively filtering debris and particles and collecting them inside the filter port, which can be easily accessed for cleaning and maintenance.

in-line design
passively removes
particles and debris

- Passively filters debris and particles
- Convenient in-line design
- Ease of maintenance
- Available in a range of sizes with 100 and 800 micron filters

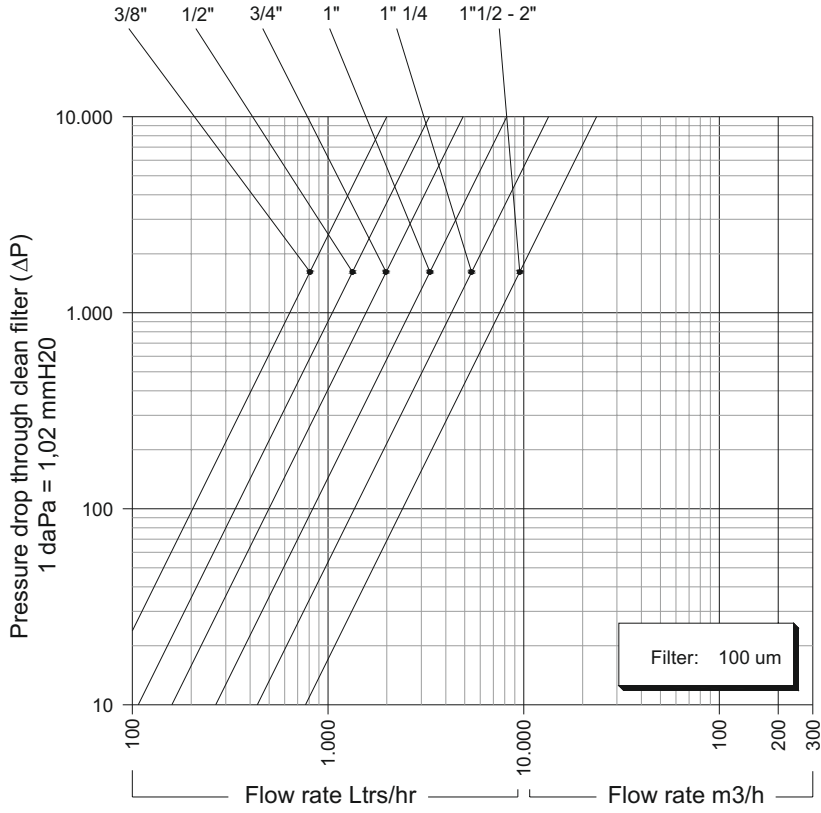
Product Range

Description	Code	
Straight line filter 15mm connection	800 micron	ILF000315800
	100 micron	ILF000315100
Straight line filter 22mm connection	800 micron	ILF000322800
	100 micron	ILF000322100
Straight line filter 28mm connection	800 micron	ILF000328800
	100 micron	ILF000328100
Straight line filter 3/8" FxF connection	800 micron	ILF0003038800
	100 micron	ILF0003038100
Straight line filter 1/2" FxF connection	800 micron	ILF0003050800
	100 micron	ILF0003050100
Straight line filter 3/4" FxF connection	800 micron	ILF0003075800
	100 micron	ILF0003075100
Straight line filter 1" FxF connection	800 micron	ILF0003100800
	100 micron	ILF0003100100
Straight line filter 1 1/4" FxF connection	800 micron	ILF0003125800
	100 micron	ILF0003125100
Straight line filter 1 1/2" FxF connection	800 micron	ILF0003150800
	100 micron	ILF0003150100
Straight line filter 2" FxF connection	800 micron	ILF0003200800
	100 micron	ILF0003200100
Straight line filter 2 1/2" FxF connection	800 micron	ILF0003250800
	100 micron	ILF0003250100
Straight line filter 3" FxF connection	800 micron	ILF0003300800
	100 micron	ILF0003300100
Straight line filter 4" FxF connection	800 micron	ILF0003400800
	100 micron	ILF0003400100

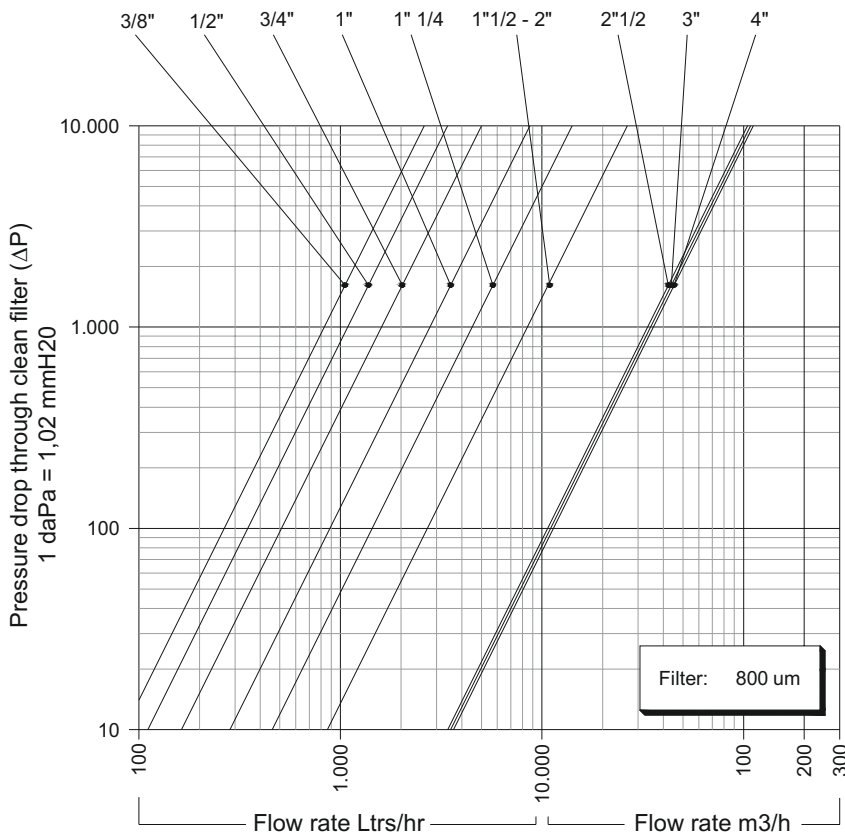


IN LINE FILTERS

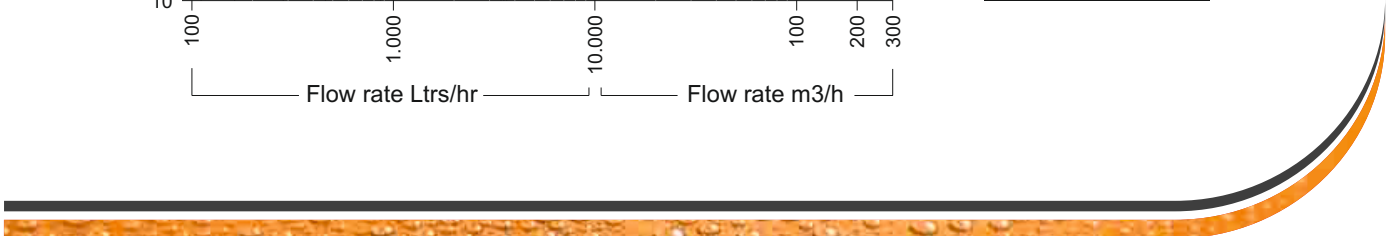
▀ Flow rate and Pressure Drop



100 [µm]	
d	Kvs m ³ /h
3/8"	2,00
1/2"	3,30
3/4"	4,90
1"	8,20
1" 1/4	13,40
1" 1/2	23,60
2"	23,60



800 [µm]	
d	Kvs m ³ /h
3/8"	2,60
1/2"	3,40
3/4"	5,00
1"	8,70
1" 1/4	14,10
1" 1/2	26,50
2"	26,50
2" 1/2	104,70
3"	108,20
4"	111,80

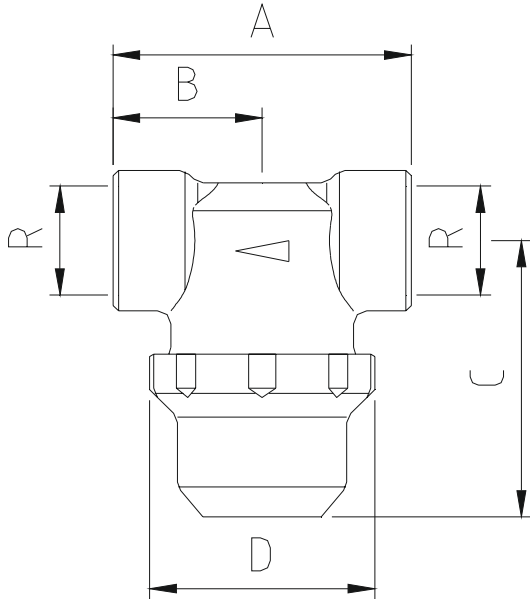


IN LINE FILTERS

▀ Technical Specification

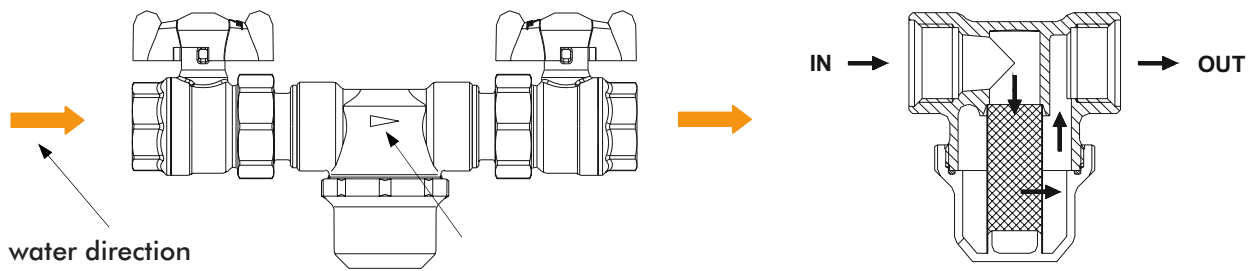
Max pressure (static)	16 bar
Max temperature	100°C
Fluid type	water

▀ Dimensions



(R)	A [mm]	B [mm]	C [mm]	D [mm]
3/8"	50	25	51	42
1/2"	56	28	53,5	42
3/4"	67	33,5	51,5	47,5
1"	80	40	55.5	58
1" 1/4	92	46	68.5	70
1" 1/2	110	55	93.5	80
2"	110	55	93.5	80
2" 1/2	180	90	193	186
3"	188	94	193	186
4"	202	101	193	186

▀ Operation



The water travels through the filter mesh by means of the passage inside the fitting. The water is cleaned by the filter and continues to exit the fitting. The impurities are captured by the filter and accumulate at the bottom of the fitting. Periodic cleaning of the in line filter should be carried out to maintain performance.