



## Product

**HTMWMBCP - Wall Mounted Infra-Red Thermostatic Hospital Tap, Battery Operated**

**HTMWMMCP - Wall Mounted Infra-Red Thermostatic Hospital Tap, Mains Operated**

**HTMWMBRS - Wall Mounted Infra-Red Thermostatic Hospital Tap, Battery Operated with Detachable Spout**

**HTMWMMRS - Wall Mounted Infra-Red Thermostatic Hospital Tap, Mains Operated with Detachable Spout**

## Technical Specification

<b>Max Inlet Pressure (static):</b>	<b>10 Bar</b>
<b>Min Inlet Pressure (dynamic):</b>	<b>1 Bar</b>
<b>Max Inlet Temperature:</b>	<b>85°C</b>
<b>Factory Pre-set Temperature:</b>	<b>41°C</b>
<b>Temperature Stability:</b>	<b>+/-2°C</b>
<b>Max Unbalanced Pressure Ratio:</b>	<b>5:1</b>
<b>Min temperature differential Between Hot Inlet &amp; Mixed Outlet to Achieve Cold Water Failsafe:</b>	<b>10°C</b>



## Additional Information

**Conforms to Healthcare Performance Requirements HTM04-01 D08**

**Full safe touch body**

**Thermostatic control**

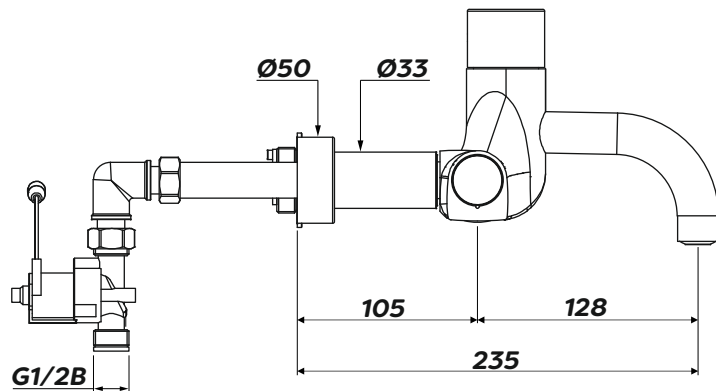
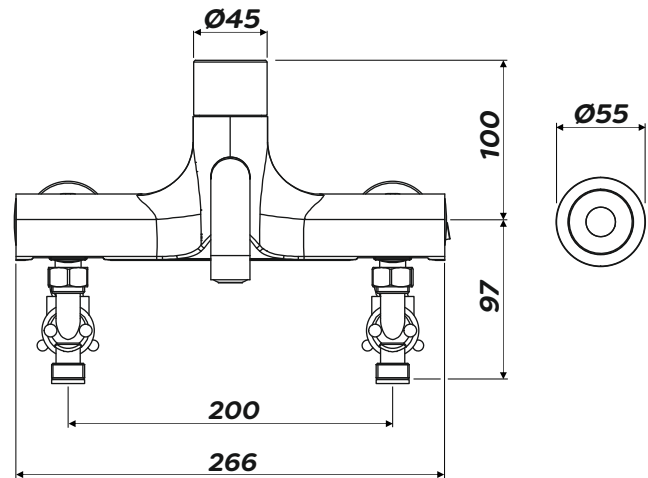
**Integral isolation valves**

**Infra-red control with 24 hour auto hygiene flush**

**Smooth internal waterways**

**Sterilisation function for complete tap**

**Flow straightener compliant with HTM04-01**



For More Information Please Scan

**Intatec, Airfield Industrial Estate, Hixon, Stafford, ST18 0PF**

**T. 01889 272180 F. 01889 272181 E. [sales@intatec.co.uk](mailto:sales@intatec.co.uk)**

**[www.intatec.co.uk](http://www.intatec.co.uk)**