

## **LO810CP Wall Mounted Knee Operated Multi Directional Valve - Exposed**

For use with 40015CP Mixing Valve

### **Introduction**

The Inta multi directional lever operated valve allows the user to deliver hot, cold or mixed temperature water in a controlled and hygienic way.

The valves are simple to install, easy to use and durable making it ideal for a wide range of applications.

### **Technical Specification**

Max. Inlet Pressure:	5 bar
Min. Inlet Pressure:	0.1 bar
Max. Inlet Temperature:	65° C
Flow Time:	15 ± 3 sec. at 3 bar
Inlet Connection - Compression:	15 mm
Outlet Connection - Compression:	15 mm

### **Location**

Mount on a tiled wall or similar water proof surface.

The flow controller must not be positioned where it will be subjected to freezing conditions.

### **Installation Instructions**

It is recommended, especially in hard water areas, that a water softener such as the ActivFlo or ActivFlo lite be fitted to reduce the risk of calcium deposits forming.

Flush the supply pipe before fitting the flow controller as debris will prevent it from working correctly.

Screw the backplate onto the controller and hand tighten.

**Note which hole is on the outlet side of the controller and mark with a temporary marker, this will be the upper hole nearest to the shower head or outlet.**

Unscrew the backing plate and position on the wall, using the 2 holes as a template mark the position for the 2 fixing holes.

The flow controller can be used for a variety of applications, to deliver hot, cold or mixed water where the user can be seated or standing. The controller should be positioned at a height and position to suit application and user.

Drill and plug to suit the fixing screws. If the wall is plaster board or soft building block use special wall plugs obtainable from most DIY stores.

Fit the backplate to the wall and tighten the screws.

Screw the controller to the backing plate and check the flow direction arrow to ensure that the flow will be vertically upwards to the flow outlet.

To keep the connecting pipe between the controller and shower head parallel to the wall, bend an offset and cut to length.

For additional security the pipe should be offset to suit a pipe bracket or saddle band which should be fitted midway between.

Using the compression nuts and olives provided make water tight joints and also on the connection to the shower head or outlet.

A service ball valve must be installed in the supply pipework or the controller must be supplied via a thermostatic mixing valve, which has supply connections containing an isolating valve, to enable the controller and shower head to be isolated for cleaning or servicing.

### **Operation**

Move the lever sideways using hand, forearm, elbow or knee in any direction to operate the controller then release to start the timed flow.

**NOTE:** The lever should not be held open for prolonged periods.

### **Aftercare**

Inta controllers have a high quality finish and should be treated with care. An occasional wipe with a mild washing-up liquid on a soft damp cloth followed by a thorough rinsing is all that is required.

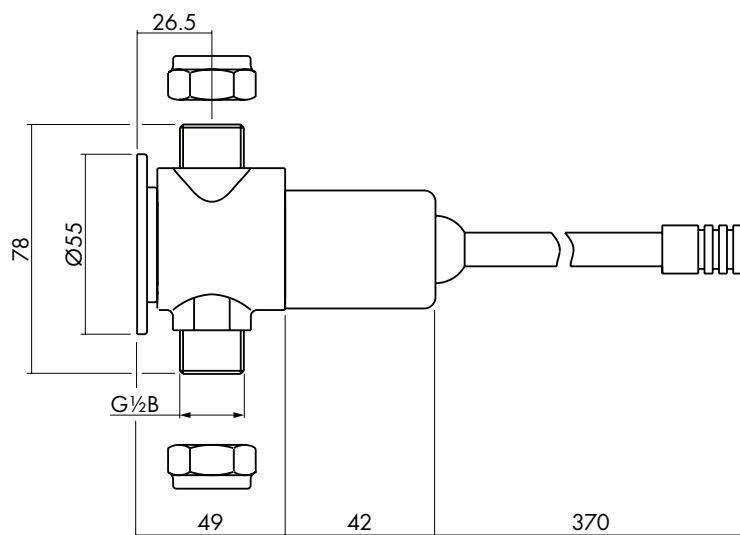
Do not use an abrasive or chemical household cleaner as this may cause damage.

Inta controllers are manufactured to the highest standards and require little maintenance. The sealing washer should last for many years and is readily available.

## LO810CP Wall Mounted Knee Operated Multi Directional Valve - Exposed

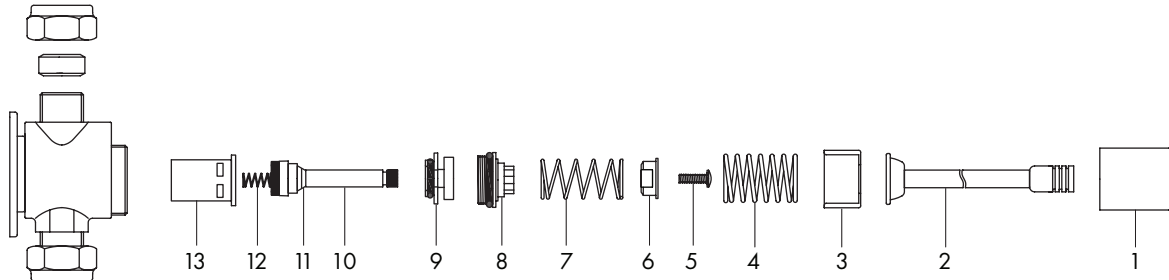
For use with 40015CP Mixing Valve

### Dimensions



Item	Component
1	Shroud
2	Lever
3	Push cap
4	Lever spring
5	Brass Phillips screw
6	Spring cap
7	Spring
8	Upper controller cartridge body
9	Segment
10	Spindle seat
11	Seating
12	Bleed spring
13	Plastic cartridge

### Components



### Cartridge Replacement

- Isolate the incoming water supply.
- Unscrew the shroud (1) and the lever (2), the push cap (3) and lever spring (4) will be removed.
- **CAUTION** - when unscrewing the shroud from the body take care that the spring (4) does not escape and fly off possibly causing injury.
- The spring cap (6), retaining screw (5) and spring (7) are now exposed.
- Using suitable grips to hold onto the spanner flats on the spring cap (6), unscrew the retaining screw (5) and again carefully release and remove the spring (7).
- Using a suitable spanner unscrew the upper control cartridge body (8) which allows the cartridge components (9), (10), (11), (12) and (13) to be removed.
- Examine the rubber seal and plastic cartridge for signs of damage and wear.
- If damaged or worn replace the complete cartridge assembly - components (13) to (5).
- The spring cap (6), retaining screw (5) and spring (7) will need to be removed to allow upper controller cartridge body to be screwed into the valve body.
- Re-assemble in the reverse order taking care when compressing the spring (4) when refitting the shroud.