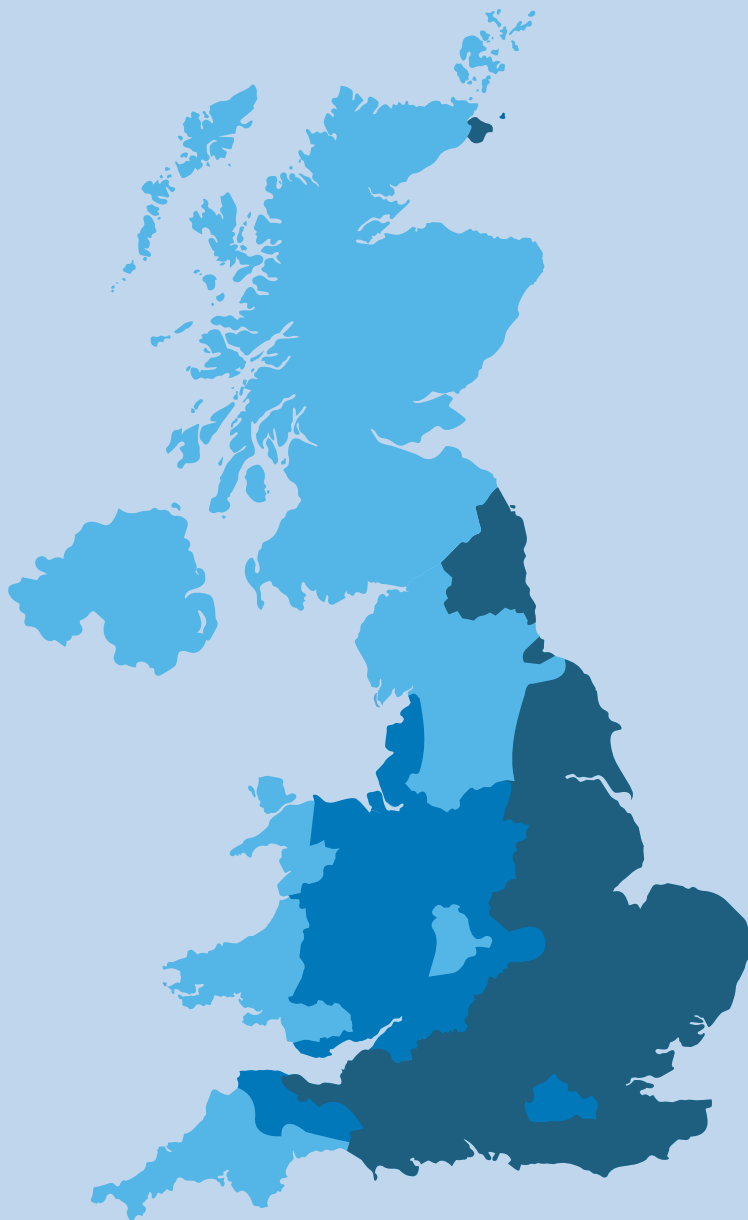




 **ActivFlo**

**The Domestic & Commercial
Solution to Hard Water**





UK Water Hardness Map

- Soft water - 0 to 100 mg/l as calcium carbonate
- Hard water - 100 to 200 mg/l as calcium carbonate
- Very hard water - 200+ mg/l as calcium carbonate

Unless you live in Scotland, the Lakes, the western reaches of Wales or Northern Ireland, you're in a hard water area. And that means that up until now, you probably believe that scaling of your kettle, shower and tap heads is something you just have to live with.

Well, here's some good news. You don't!

In the past, the only method of dealing with hard water was to invest many hundreds, perhaps even thousands of pounds in installing a water softening device. These were bulky and required regular infusions of salt to keep them working effectively.

Installing such a device also meant that you couldn't drink the water because of the salty taste.

Now, there's no need for such an expensive and complicated approach, because technology has moved on.

ActivFlo is the new, inexpensive way to condition the water coming into your house. It stops scale formation in every part of your water system. It even helps remove existing scale.

ActivFlo Range of Domestic & Commercial Water Conditioners

Introducing the ActivFlo range of domestic and commercial water conditioners available from Inta.

Featuring the latest technology in the battle against limescale build-up in domestic homes and systems, supplied as standard with compression connections to suit various pipework sizes and to accommodate a large range of incoming flow rates.

How does ActivFlo work?

In hard water, there are calcium carbonate crystals.

As this water passes through the ActivFlo, two things happen. It's exposed to a small electrical charge on the surface of the alloy and it also experiences a drop in pressure, caused by the alloy's shape. These actions cause the calcium carbonate to form an insoluble aragonite crystal. These crystals, microscopic in size, are smoother and do not have the same bonding properties as calcium carbonate. This means that they can't stick to pipework, heating elements, shower heads etc. They remain suspended in the water and ultimately flow out through the drain.

And because ActivFlo is not a filter, the water retains all its minerals, making it just as good to drink.

Already have limescale in your system? No problem.....

ActivFlo effectively reduces the calcium carbonate in the water. Because the treated water has less calcium carbonate the water needs to absorb it from somewhere to maintain an equilibrium. It does this by absorbing any calcium carbonate already in the system - so gradually de-scaling the system over time.

The speed of the process depends on a number of factors, such as the amount of scale in the system, volume of water used, and the water flow

However, over a relatively short period, any existing deposits will start to soften and can be easily removed if they are in exposed situations like shower heads, taps etc.

In the hidden parts of your water system like electrical elements etc, the particles are gradually released and ultimately flow away.

What are the benefits of using ActivFlo?

- ActivFlo supplies whole house protection
- Actively reduces the buildup of limescale inside pipework, heating components and appliances throughout domestic properties
- Improves system efficiency
- No maintenance required
- No electrical connections needed
- 15 year manufacturing warranty
- Helps to reduce fuel and maintenance costs





Specification guide for Domestic sizes

Select the right ActivFlo water conditioner by matching it to the water flow of your installation using the matrix below.

Choose the model where the actual flow rate is in the mid range between the minimum and maximum flow rates shown. Select carefully as choosing the incorrect water conditioner may impair the functionality of the unit.

ActivFlo part code	AF015	AF022	AF028
Body connection	15mm compression	22mm compression	28mm compression
WRAS approval	YES	YES	TBA
Minimum operational flow	3 ltrs/min	22 ltrs/min	45 ltrs/min
Maximum operational flow	21 ltrs/min	45 ltrs/min	74 ltrs/min
Length	145mm	195mm	305mm
Warranty*	15 years	15 years	15 years

* To activate the warranty, the product must be registered with ActivTec within one month of installation.

Specification guide for Commercial sizes

Select the right ActivFlo water conditioner by matching it to the water flow of your installation using the matrix below.

Choose the model where the actual flow rate is as close as possible to the optimum rates shown. Select carefully as choosing the incorrect water conditioner may impair the functionality of the unit. The “maximum operation flow” is the most water passing through the valve at which it still remains effective.

ActivFlo part code	AF0114	AF0112	AF002
Body connection	1 ¼" male bsp	1 ½" male bsp	2" male bsp
Optimum flow rate	90 ltrs/min	120 ltrs/min	210 ltrs/min
Maximum operational flow	138 ltrs/min	225 ltrs/min	330 ltrs/min
Length	550mm	550mm	550mm
Warranty*	15 years	15 years	15 years

ActivFlo part code	AF0025	AF003	AF004
Body connection	2 ½" flanged	3" flanged	4" flanged
Optimum flow rate	330 ltrs/min	450 ltrs/min	800 ltrs/min
Maximum operational flow	483 ltrs/min	800 ltrs/min	1500 ltrs/min
Length (in mm)	850mm	850mm	850mm
Warranty*	15 years	15 years	15 years

ActivFlo part code	AF005	AF006
Body connection	5" flanged	6" flanged
Optimum flow rate	1550 ltrs/min	2400 ltrs/min
Maximum operational flow	2200 ltrs/min	4100 ltrs/min
Length	850mm	850mm
Warranty*	15 years	15 years

* To activate the warranty, the product must be registered with ActivTec within one month of installation.



ActivFlo Pro Impressed Catalytic Water Conditioners

Introducing the ActivFlo Pro Range of Impressed Current Catalytic Water conditioners available from Inta, suitable for Industrial, Commercial and Agricultural operations.

Featuring the latest technology to help in the battle against limescale build-up in establishments and systems.

Supplied as standard with male BSP or flanged connections to suit most commercial pipework sizes and a low voltage power regulator for an increased performance level.

The power supply delivers a permanent electrical field which is preferred by many water treatment companies, as the field can be measured and the treated water stays treated for longer. Operation of ActivFlo Pro can also be incorporated into modern Building Management systems.

In every other respect, ActivFlo Pro works in exactly the same way.

The device delivers an electrical field within the chamber casing and turbulence of the water through a specially designed catalytic chamber. The effect is to make the calcium carbonate crystals reform as the much smaller and smoother aragonite crystal.

The benefits for commercial applications, are of course greater thanks to the improved quality of the water.

Take a look at the before and after photographs and you can see that the ActivFlo Pro Conditioner eliminates the cohesion that exists between the mineral particles in the water.

The mineral particles in the photographs have been precipitated from 'the same water sample' with a reading of 750mg/l hardness.

Note how the particles are bound together before the ActivFlo Pro treatment and "separated" afterwards.

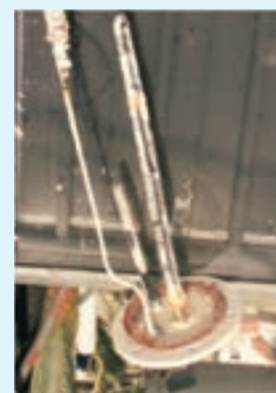
Scientific analysis has shown that the mineral particle size has reduced from 100-400 microns for untreated water, to 30 microns in the treated water.

The major advantage of using ActivFlo Pro is that the treated water retains its conditioned state, compared with the more usual magnetic water treatment devices.

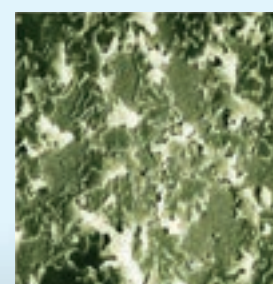
In addition, after treatment, the water, now a solvent, slowly etches, loosens and dissolves the existing scale from the system and once clean, the system stays clean. When installed and maintained correctly, ActivFlo Pro will also last a lifetime. We support the product with a lifetime warranty as well as a money back guarantee.



Before



After



Electron microscope 1440 x magnification





Typical ActivFlo Pro applications

Water supply solutions;

Laboratory tests have confirmed a reduction of 70% in the concentration of residual chlorine in ActivFlo Pro conditioned water. This decrease is due to the freeing of the chlorine artificially trapped between the mineral particles of the water before being conditioned. It is freed into the atmosphere in gaseous form as water leaves your tap. With an ActivFlo Pro fitted you get the benefits of chlorination, but without the taste.

Swimming Pools;

Laboratory tests confirm a decrease of 20% in the turbidity* of the conditioned water. The ActivFlo Pro Water Conditioner causes the mineral particles to repel each other, separate, and become smaller in size. Because there is less light refraction (from the smaller particles) the water appears clearer.

*Turbidity is the cloudiness or haziness of a fluid caused by large numbers of individual particles that are generally invisible to the naked eye, similar to smoke in air. The measurement of turbidity is a key test of water quality.

Washing Machines;

Conditioned water contains smaller particles, which pass more readily through clothes being washed. The water tends to penetrate fibres more effectively to carry away dirt and grease. In unconditioned water, larger particles and other substances can become trapped in detergent and in the fibres of the clothes you are washing, causing staining.

Salinity treatment for use in irrigation;

Our records confirm the successful treatment of bore water, reducing the saline effect on crops.



The lifetime warranty applies only to the water conditioner - not the power regulator, which has a two year warranty.



Specification guide for ActivFlo Pro



Select the right ActivFlo Pro water conditioner by matching it to the water flow of your installation, using the matrix below. Select carefully as choosing the incorrect water conditioner may impair the functionality of the unit.

Choose the model where the actual flow rate is as close as possible to the optimum rates shown. Select carefully as choosing the incorrect water conditioner may impair the functionality of the unit. The “maximum operation flow” is the most water passing through the valve at which it still remains effective. ActivFlo Pro requires a 230v AC electrical connection.

ActivFlo Pro part code	AFP 22 PR	AFP 34 PR	AFP 10 PR
Body connection	22mm pipe size connection, ActivFlo Pro & power regulator	¾" male ActivFlo Pro & power regulator	1" male ActivFlo Pro & power regulator
Optimum flow rate	24 ltrs/min	24 ltrs/min	54 ltrs/min
Maximum operational flow	54 ltrs/min	54 ltrs/min	90 ltrs/min
Length	195mm	195mm	305mm
Warranty*	15 years	15 years	15 years

ActivFlo Pro part code	AFP 14 PR	AFP 112 PR	AFP 20 PR
Body connection	1¼" male bsp ActivFlo Pro & power regulator	1½" male bsp ActivFlo Pro & power regulator	2" male bsp ActivFlo Pro & power regulator
Optimum flow rate	90 ltrs/min	120 ltrs/min	210 ltrs/min
Maximum operational flow	120 ltrs/min	210 ltrs/min	330 ltrs/min
Length	550mm	550mm	550mm
Warranty*	15 years	15 years	15 years

ActivFlo Pro part code	AFP 212 FPR	AFP 30 FPR
Body connection	2½" flanged ActivFlo Pro & power regulator	3" flanged ActivFlo Pro & power regulator
Optimum flow rate	330 ltrs/min	450 ltrs/min
Maximum operational flow	450 ltrs/min	810 ltrs/min
Length	850mm	850mm
Warranty*	15 years	15 years

* To activate the warranty, the product must be registered with ActivTec within one month of installation.





The Domestic & Commercial Solution to Hard Water



Airfield Industrial Estate
Hixon
Staffordshire
ST18 0PF

w: www.activ-tec.com
e: sales@activ-tec.com

t: 01889 272180