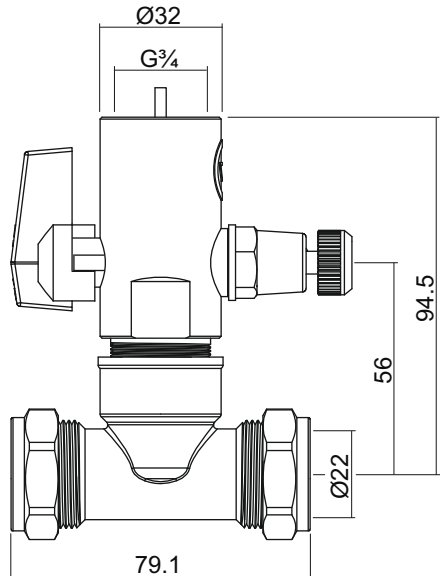
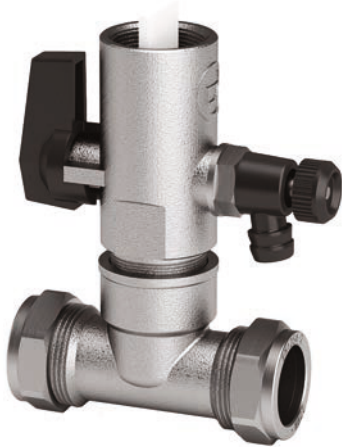


## ***FTV22.1 Flow-Through Valve Installation and Maintenance Instructions***



### **Description**

I-flow Vortex is designed to be used in conjunction with 22mm pipework, and expansion vessels with a ¾" BSP connection.

### **Function**

The I-Ball Vortex Flow Through Valve has been specifically designed and engineered to aid the installation and operation of expansion vessels on fluid systems, and actively reduces the risk of water stagnation in vessels during periods of none-use.

I-Ball Vortex features a unique fully lockable isolation valve handle to reduce the chance of any unauthorized operation.

The isolation valve allows operatives to access the expansion vessel quickly and efficiently for servicing and maintenance procedures.

## Installation

Identify the location in the system to install the expansion vessel.

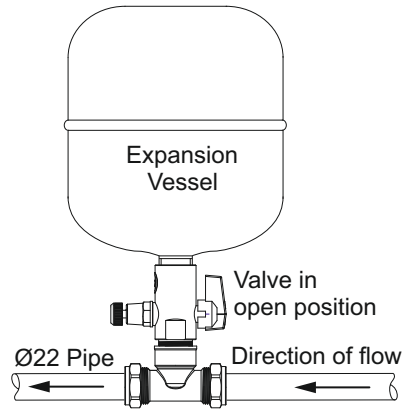
Mark a section of pipework long enough to fit the Tee piece into, cut the pipe where marked and ensure its free of any burrs and debris.

Fit the compression nuts and olives onto the pipework, connect to the Tee piece and sufficiently tighten into position (35 Nm's)

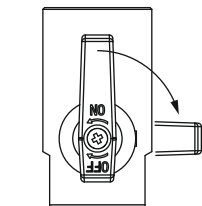
Screw the expansion vessel into the top of the valve ensuring a watertight seal is created using the internal 'O' ring.

**Note:** it may be necessary to add additional sealing tape to ensure a watertight seal.

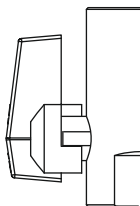
The copper tube must be adequately supported and we advise an additional bracket is used to support the expansion vessel.



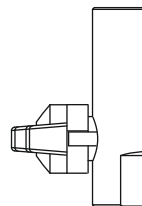
## Locking Feature



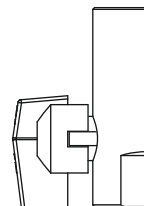
Valve open rotate clockwise to close



Valve open unlocked



Valve closed unlocked



Valve open locked

The valve can be locked in both the open and closed positions by removing the lever retaining screw and pull the lever away from the valve, rotating through 180° and re-fitting so that the notch in the lever fits over the lug on the body. Refit and tighten the lever retaining screw.

E & O.E

In this procedure document we have endeavoured to make the information as accurate as possible. We cannot accept any responsibility should it be found that in any respect the information is inaccurate or incomplete or becomes so as a result of further developments or otherwise.

**Intatec Ltd**, Airfield Industrial Estate, Hixon, Staffordshire, ST18 0PF

Tel: **01889 272 180** email: **sales@intatec.co.uk** web: **www.intatec.co.uk**