

Installing Gauges Pressure, Temperature and Temperature - Pressure Gauges

Introduction and Selection

Inta offer a wide range of gauges to suit a comprehensive range of applications.

Before installing the gauge please check that it is the right gauge for the application.

The pressure range of the gauge should cover the working range of the application but should not be just a small part of the range of the gauge, as changes will not be easily observed.

Some recommend the range of the gauge should be twice the expected working range.

Example:

working pressure range 2.5 bar

therefore a gauge with a 4 bar range should be selected not a gauge with a 14 or 21 bar range.

The same principle applies to the temperature gauges and the temperature - pressure gauges.

Gauges are available with a bottom or back connection to suit the installation and allow the gauge to be easily seen and read.

For details of all the gauges in the Inta range consult the website or the technical leaflet covering gauges.

Fitting

Gauges can be fitted direct to valves, such as pressure reducing valves or directly into pipework or pressure vessels.

The correct pipe fitting must have been installed in the pipework to accept the gauge.

Check that the fixing thread on the gauge matches the threaded connection in the valve or pipework.

For the bi-metal thermometers a pressure and temperature (PT) test point is the easiest way to access the medium to be measured.

Pressure gauges and temperature and pressure gauges have a square section and a parallel thread to connect them to the pipework or valve.

Start turning by hand but as soon as a resistance is encountered use a suitably sized spanner on the square section to tighten the gauge into the mating thread.

When a resistance is encountered there is approximately one turn left to create a seal and consideration should be given to the final position of the gauge for easy reading.

Gauges with PTFE sealing ring - prefix GP

With this type of gauge it can be screwed directly into the threaded hole and the PTFE ring acts as a sealing washer.

PTFE tape or other thread sealing compounds are not required.

Fitting Continued

Gauges with only a thread - prefix G, GFG & TAPG

Use PTFE tape or a thread sealing compound on the threads to create a seal.

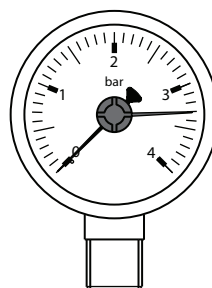
Rap two or three turns of PTFE tape onto the end of the thread before screwing the gauge into the mating thread.

For thread sealing compounds the installer must follow the manufacturer's instructions

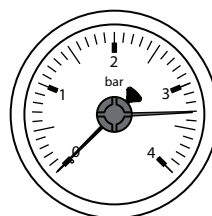
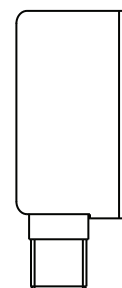
Bi-metal thermometers - prefix BMT

This type of gauge has a probe which is installed by pushing into and through a PT test point to reach the hot medium.

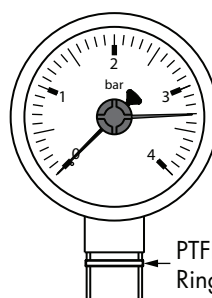
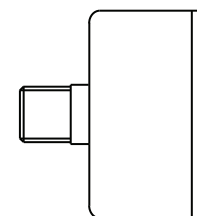
This type of temperature gauge can be left permanently in one location or can be moved from location to location during commissioning.



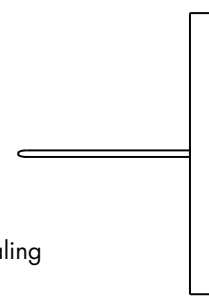
Bottom Connection Gauge



Back Connection Gauge



PTFE Sealing Ring



Push In Temperature Gauge with Probe